

DECEMBER 2020 / CASE STUDY

# HOW IN2 CONSULT USED TRACED CONTROL TO SAFEGUARD CLIENT AND CANDIDATE DATA

## IN2 CONSULT

### SOLUTION

Traced Control  
Traced for iOS

### SECTOR

Recruitment

### KEY AIM

Comply with  
GDPR in  
safeguarding  
confidential PII  
data

*"We looked at several mobile cybersecurity vendors, but it became obvious that their pricing was too high. Other vendors didn't provide the WiFi or web protection, we needed and was still more than twice the cost. Choosing Traced was a no-brainer, really."*

### LUKE SEAMAN

Managing Director, IN2 Consult



## OVERVIEW

As a recruitment company specialising in the IT and Financial Services sectors, IN2 Consult handles PII (personally identifiable information) on their clients and candidates, and securing this data is of the utmost importance to them.

As IN2 Consult's employees regularly work from home our the move between meetings, ensuring that their mobile phones were secure was an increasing concern.

With access to the company's CRM and emails on their devices, a data breach would put the company at risk of regulatory fines and reputational damage.

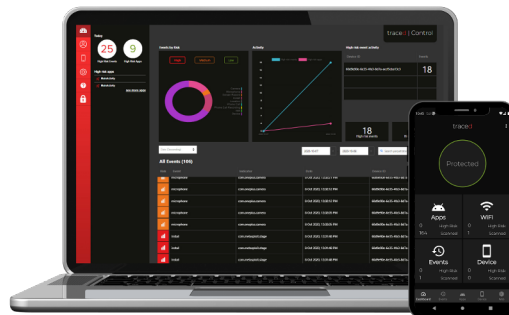
With the increasing reliance on mobile devices within the company, IN2 Consult were looking for a security solution that protected the data on those devices, but that was affordable for their growing business.

# Mobile Threat Defence to guard against data loss and breaches of privacy.

The Web Protection offered in the Traced iOS app was a must-have for IN2 Consult. It protects employees against phishing attacks and exploitative, web-based threats which the company has become increasingly concerned about.

WiFi Protection was also important to them, as it is designed to protect employees against data loss and theft whilst working remotely.

The Traced Control Mobile Threat Defence platform provides visibility the protection status of employee devices, as well as high risk events on those devices, so staff can take steps to educate users about potential threats.



*"The best thing about Traced, apart from the fact they offered better protection, was that I didn't have to do a crazy dance with a sales team just to find out the price. I did all the research on the website, clarified a few points with them on the phone, and was able to go ahead and buy Control licenses for all my employees."*

## KEY FEATURES IN SOLUTION



**WiFi protection** alerts both the device and in Control when a user connects to a compromised or insecure WiFi network.



**Device health monitoring** enables Zero Trust security and conditional access through the Control dashboard or the REST API.



**Web protection** ensures that users, devices and corporate data are protected against phishing attacks and malicious websites.



**Role-Based Access Control (RBAC)** for granular access to Control, Traced's administrative cloud-based console.



**Device update alerts** in Control identify vulnerable devices, while the Traced app reminds and guides users to patch their OS.



**Simple, affordable pricing** provides flexibility to scale up, ensuring every device is protected.

traced | Control

Mobile security, employee privacy

© 2020 Traced Ltd. All rights reserved.